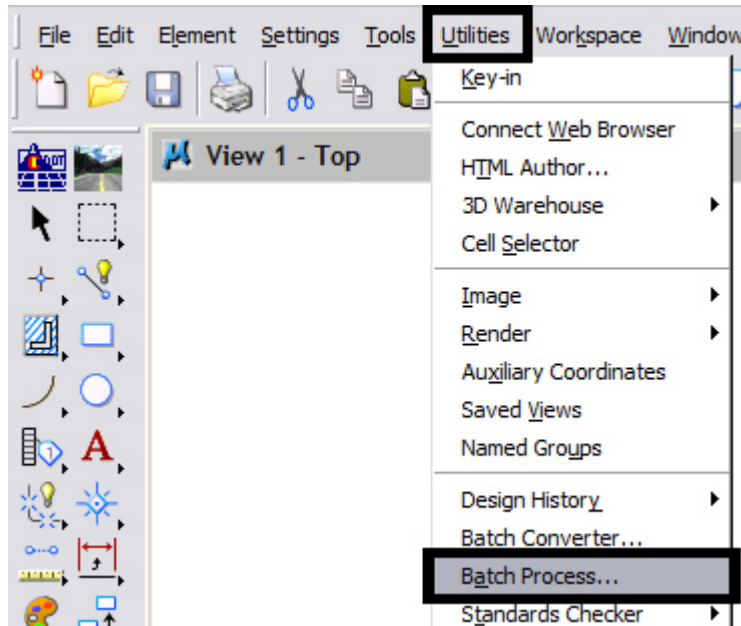


CDOT Batch Processing

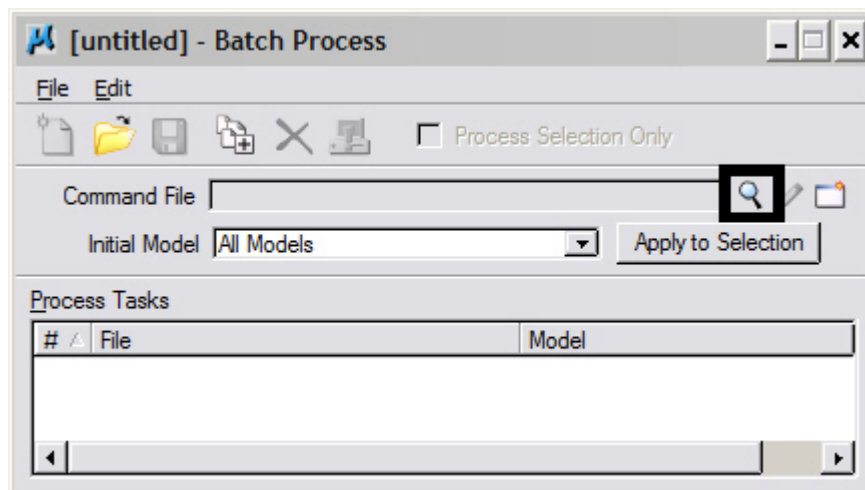


This document guides you through using the Batch Process tool in MicroStation. Additional Batch Process files can be substituted into this workflow. This example uses a specific batch process file that changes the level of the North Arrow cell and the Match Lines. In 2.04 and prior versions of the configuration, Plan and Profile Generator placed the North Arrow cell and the Match Lines on the incorrect level. This process will correct this error in multiple sheets at the same time.

1. Select **Utilities > Batch Process** in MicroStation.

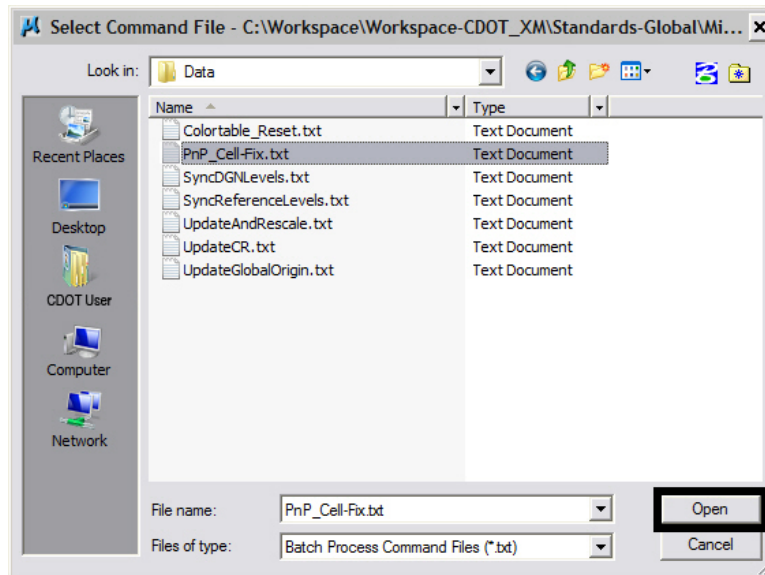


2. <D> on the **Search** icon to browse for the Batch Process command file.



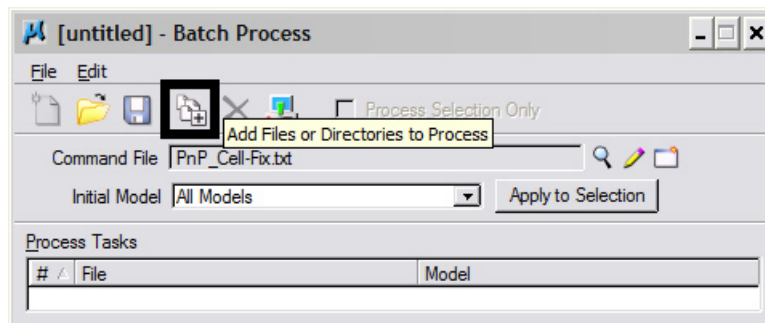
CDOT Batch Processing.pdf

3. Navigate to *C:\Workspace\Workspace-CDOT_XM\Standards-Global\MicroStation\Data*.
4. <D> the command file *PnP_Cell-Fix.txt* (found in the leftmost list box) then <D> OK.



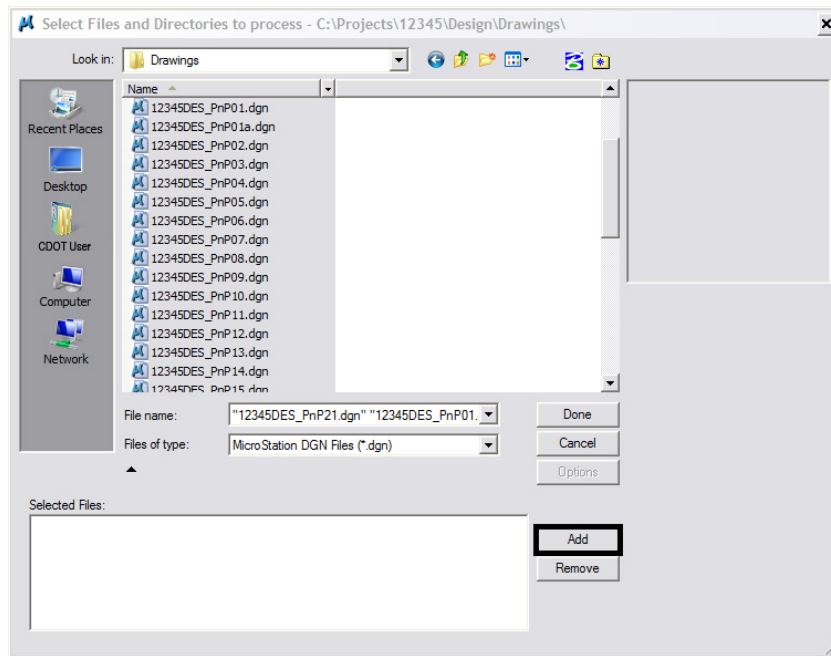
Note: The file, *PnP_Cell-Fix.txt*, changes the level of the North Arrow cell and the Match Lines from Default to the correct levels, *GEN_SHEET_North-Arrow* and *GEN_SHEET_Match-Line*.

5. <D> the Add Files icon.



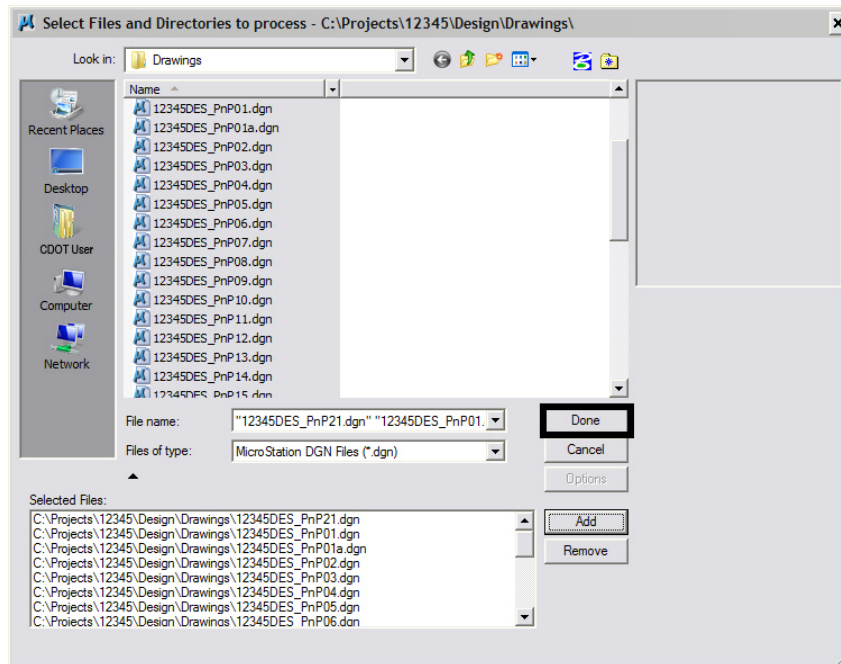
CDOT Batch Processing.pdf

6. Select the sheet files created by the Plan and Profile Generator in InRoads.
7. <D> Add.



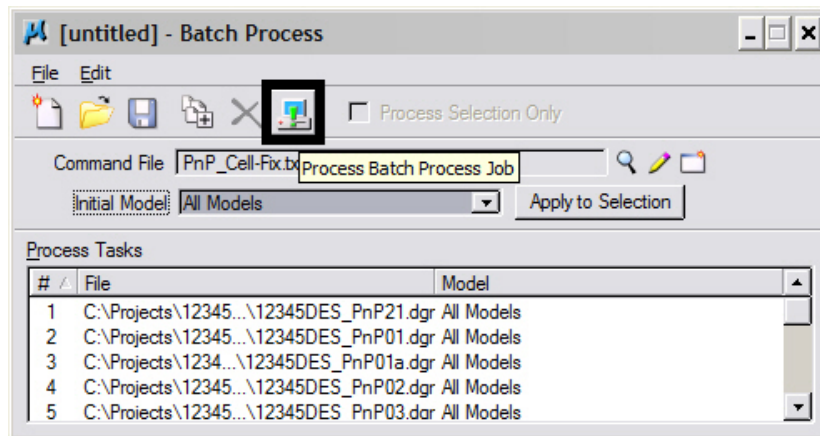
Note: You can hold down the **Ctrl** or **Shift** key to select multiple files.

8. <D> Done after the files have been added.

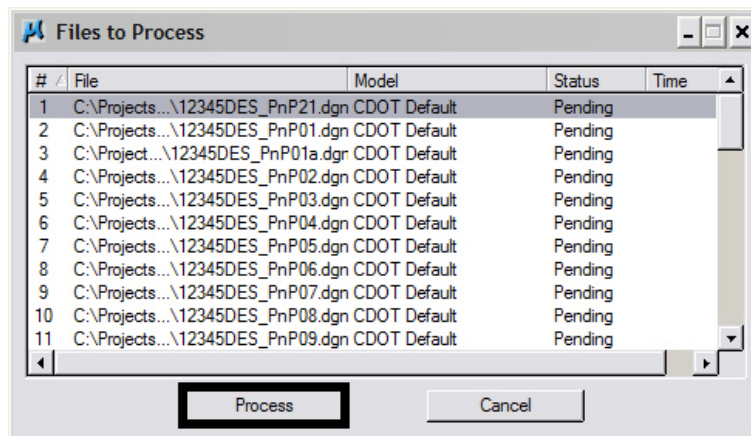


CDOT Batch Processing.pdf

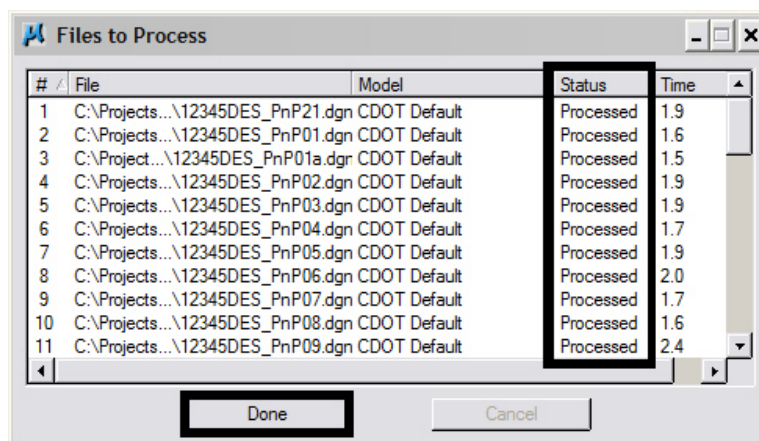
9. <D> the Process Batch Process Job icon.



10. Review the file list before processing. If this is correct, <D> the Process icon. This will execute the Batch Process command file.

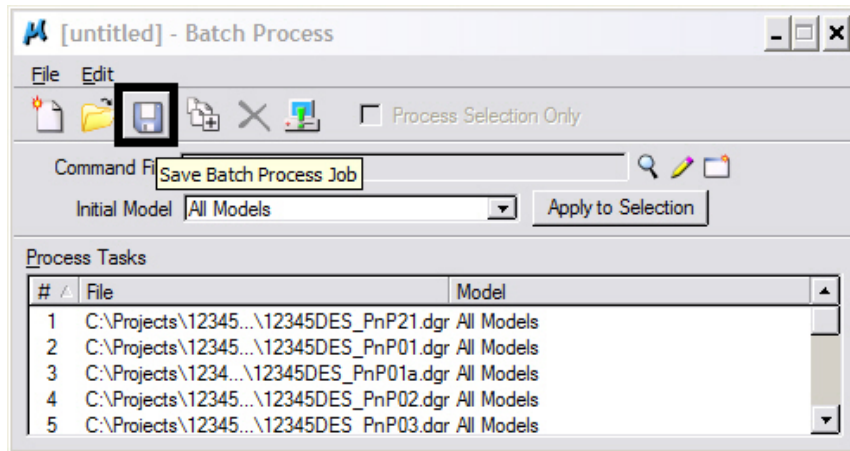


11. Review the *Status* field to make sure all files were processed without an error.
12. After verifying this, <D> Done.



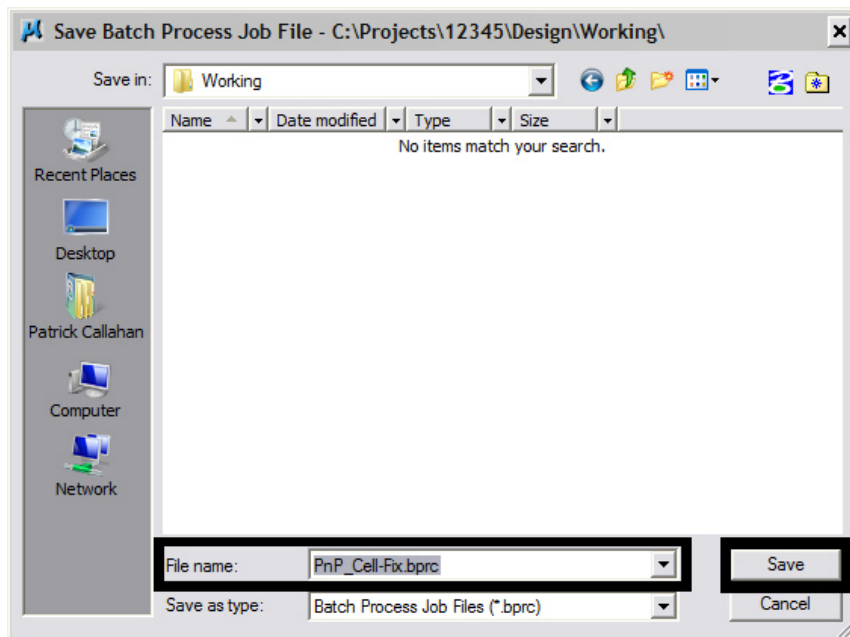
CDOT Batch Processing.pdf

13. <D> the **Save** icon to save the files included in the Batch Process. Every time you rerun the Plan and Profile generator in InRoads, the changes to the North Arrow cell and the Match Lines will be lost. You can recall the *.bprc file to execute the batch process.



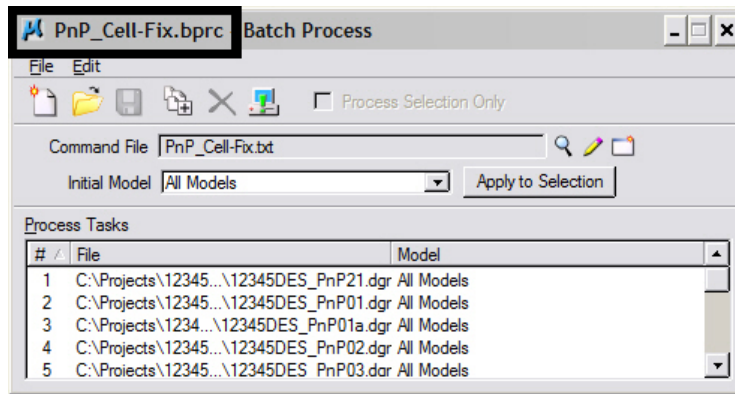
Note: If additional Plan and Profile sheets are created, be sure to update the file list.

14. Give the saved file an extension of *.bprc. Navigate to *C:\Projects\.....\Design\Working* and <D> **Save**.

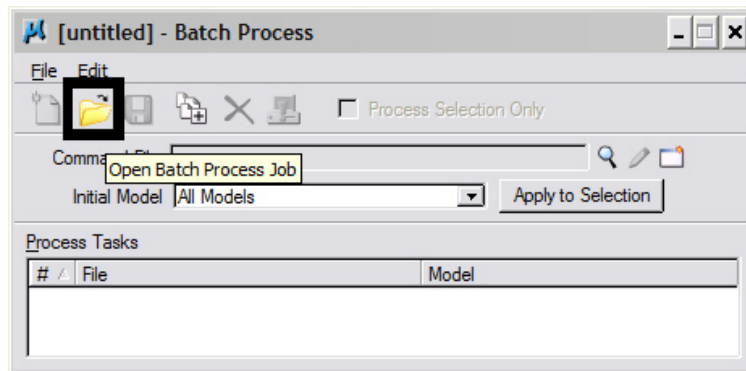


CDOT Batch Processing.pdf

15. Verify the name in the dialog header.



16. To open a Batch Process file <D> the Open icon.



17. Navigate to the *.bprc file previously saved, <D> the filename then <D> OK.
Follow steps 9-12 to execute the Batch Process command file.